

tejas II



SHOWN WITH MODEL B
BOILER FEED SYSTEM

GAS, OIL (NO. 2) OR
COMBINATION GAS OR NO. 2 OIL

WILLIAMS & DAVIS BOILERS, INC.

972-225-2356
1-800-8BOILER
E-mail: w-dboilers@dhc.net

www.w-dboilers.com

P.O. BOX 539
HUTCHINS, TX 75141
FAX 972-225-5739

"W&D" tejas II

Package Scotch Marine Boilers for Sizes 15-60

High Pressure Steam to 400 PSIG
Low Pressure Steam -- 15 PSIG
Low Pressure Water 0-160 PSIG

ASME, Section I
ASME, Section IV
ASME, Section IV

All boilers are stamped and registered with The National Board.

Shell and firetube are pressure vessel quality steel, welded construction, X-Rayed (shell on both high and low pressure boilers). Section I boilers are post-heat treated to relieve all stresses that might be caused by welding.

Large steam area assures dry steam with reserve for peak loads. Dry pan is installed in all boilers.

Boiler tubes are 2" or 2 1/2" diameter. Heavy wall is full 12 gauge (.109") and designed for fast steaming and more efficient operation. Tubes are spaced 7/8" or more apart. All tubes are rolled and beaded. No tubes are welded.

Heatmizers are patented and supplied as standard equipment with all "W&D" boilers to insure 80% or more efficient operation. Each Heatmizer is engineered for equal heat distribution over the entire boiler for maximum heat transfer. "W&D" Scotch Marine boilers are guaranteed not to exceed 100° F net stack temperature readings above steam temperature.

The entire boiler is covered with rockwool and glass block type insulation with two layers of insulation paper, which assures economical operation and cooler boiler room. Insulation is protected by 20 ga. galvanized steel jacket.

Primary pump and low water cut-off control supplied with water column and electrically wired.

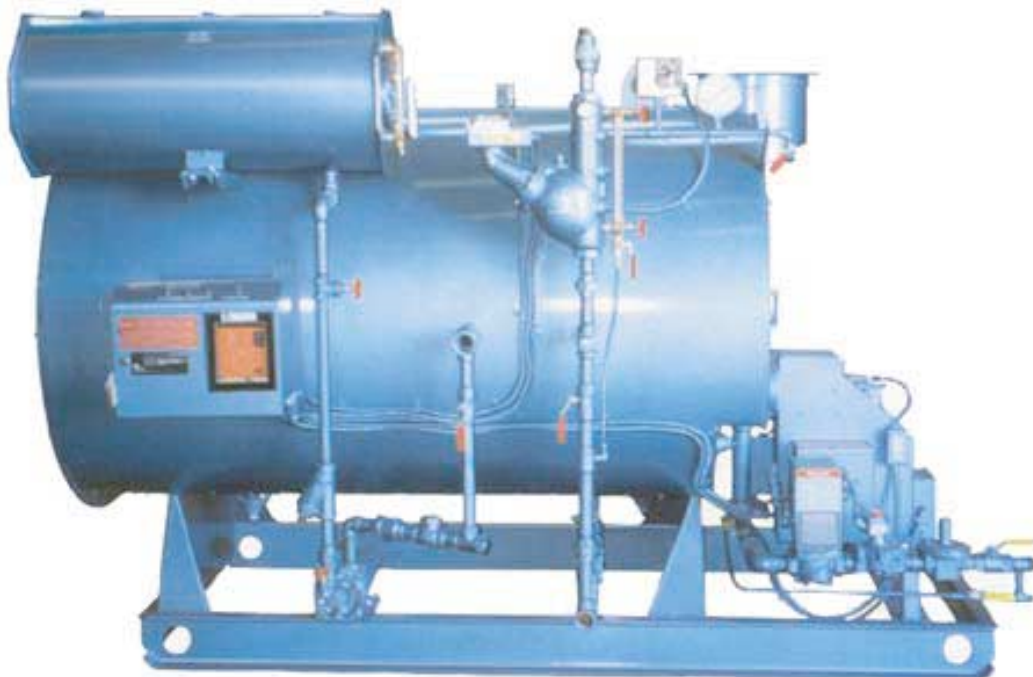
Secondary low water cut-off control is probe type, mounted in boiler shell.

The front door is insulated, easy to remove without interference of burner, piping or electrical parts to open for inspection or future repairs.

Rear doors are hinged on Sizes 30 through 60.

Forced draft gas (all types), light oil, or combination UL burners are for efficient trouble-free operation. Only two (2) simple adjustments. Swirling short flame pattern makes maximum use of radiation and forced convection principles. All burners are designed for On-Off operation, however full modulation is available at the prevailing price, as well as requirements for special insurance or municipal codes. CSD-1 controls supplied as standard equipment.

Five (5) Year Limited Warranty on the W&D pre-cast high temperature refractory block and arch. Warranty is based on the refractory being kept dry and the rear door is not allowed to leak form combustion air. Warranty does not include freight or labor.

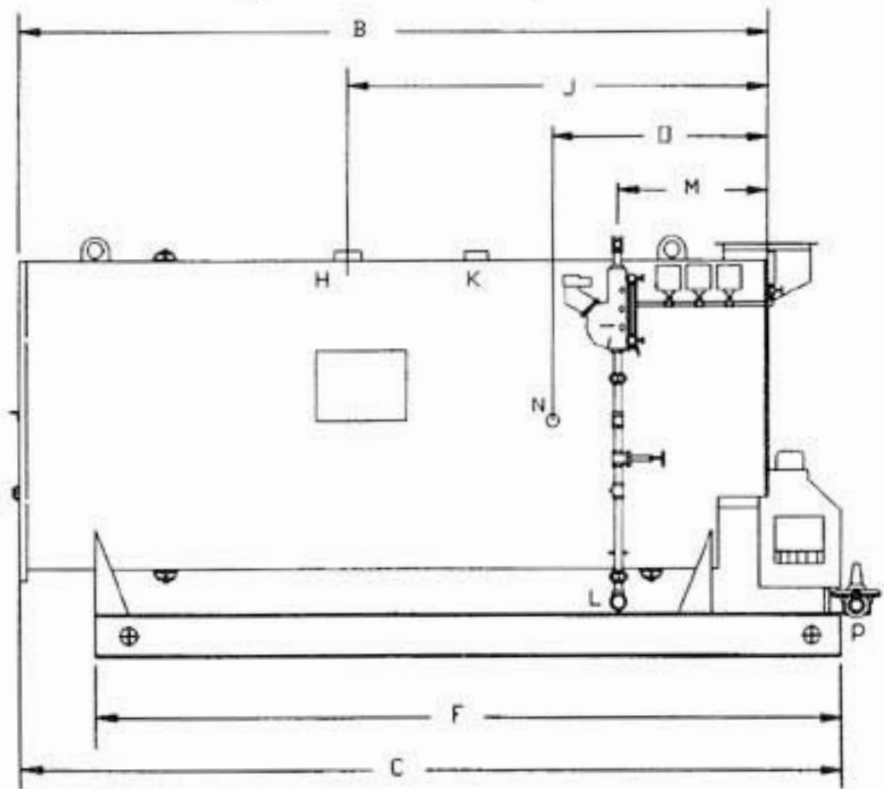
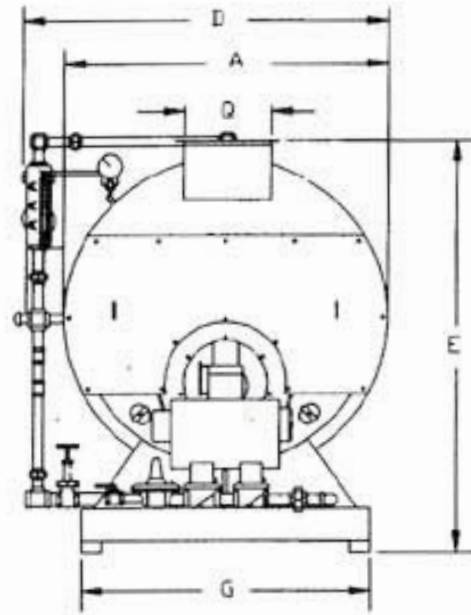


SPECIFICATIONS

Boiler Size		No.	15	20	25	30	40	50	60
HEATING SURFACE (Fire Side)	Sq. ft.		75	102	126	155	200	250	300
	m ²		7	10	12	15	19	23	28
STEAM OUTPUT	lbs/hr		517	690	862	1035	1380	1725	2070
FROM & AT 212°F (100°C)	Kg/hr		234	313	390	470	624	780	936
RADIATION	Sq. ft. Steam EDR		2100	2800	3500	4200	5600	7000	8400
	m ² Steam EDR		195	260	326	391	521	651	781
RADIATION	Sq. ft. Water EDR		3350	4500	5600	6700	9000	11200	13400
	m ² Water EDR		312	419	521	623	837	1041	1246
MBH			502	670	837	1004	1339	1674	2008
KCAL per Hr	1000		126	168	210	252	336	420	504
GAS BURNER	BTU INPUT 1000		630	840	1050	1260	1680	2100	2520
	KCAL INPUT 1000		158	210	263	315	420	525	630
MOTOR SIZE	HP		1/3	1/3	1/2	1/3	1/2	3/4	1
MOTOR R.P.M.			3450	3450	3450	3450	3450	3450	3450
GAS PRESSURE	psi		1	1 1/2	1 1/2	1 1/2	1 1/2	1 1/2	1 1/2
MAX. INLET TO REG.	Kg/Cm ²		0.07	0.1	0.1	0.1	0.1	0.1	0.1
GAS PRESSURE	IN W.C.		4	4	4	4	4	5	5
MANIFOLD	mm W.C.		102	102	102	102	102	127	127
OIL BURNER (No. 2 Oil)*	GPH		4.5	6	7.5	9	12	15	18
	IPH		17	23	28.5	34	45.5	57	68
A DIAMETER OF INSULATED BOILER	IN		35	41	41	47	47	53	53
	cm		89	104	104	120	120	135	135
B LENGTH OF BOILER	IN		66	64	78	75	87	104	120
	cm		168	163	199	191	222	265	306
C LENGTH WITH W&D BURNER OVERALL	IN		85	84	97	103	114	130	145
	cm		216	214	247	262	290	331	369
D WIDTH WITH CONTROLS	IN		46	52	52	58	58	64	64
	cm		117	132	132	148	148	163	163
WIDTH WITH "B" RETURN SYSTEM									
E HEIGHT (STACK TO FLOOR)	IN		54	60	60	66	66	72	72
	cm		138	153	153	168	168	183	183
F LENGTH OF SKIDS	IN		71	69	81	92	104	112	128
	cm		181	176	206	234	265	285	326
G WIDTH OF SKIDS	IN		27	33	33	40	40	46	46
	cm		69	84	84	102	102	117	117
H SIZE STEAM OUTLET	15 psi IN		2	2 1/2	3	3	4	4	6
	1.05 Kg/cm ² mm		51	64	76	76	102	102	152
	150 psi IN		1	1	1 1/4	1 1/4	1 1/2	2	2
	10.5 Kg/cm ² mm		25	25	32	32	38	51	51
J LOCATION OF STEAM OUTLET	IN		40	40	40	48	48	53	61
	cm		102	102	102	122	122	135	155
K SIZE RELIEF VALVE OPENING AS REQUIRED BY CODE									
L SIZE BLOWOFF OPENINGS	IN		1	1	1	1 1/4	1 1/4	1 1/4	1 1/4
	mm		25	25	25	32	32	32	32
M LOCATION OF BLOWOFF OPENING	IN		16	18	18	18	18	25	25
	cm		41	46	46	46	46	64	64
N SIZE WATER FEED OPENING	IN		3/4	3/4	3/4	1	1	1	1
	cm		19	19	19	25	25	25	25
O LOCATION OF WATER FEED OPENING	IN		28	30	30	30	30	37	37
	cm		71	76	76	76	76	94	94
P SIZE OF GAS PIPING	IN		1	1 1/4	1 1/4	1 1/2	1 1/2	2	2
	cm		25	32	32	38	38	51	51
Q STACK DIAMETER	IN		8	10	10	12	12	12	12
	cm		20	25	25	31	31	31	31
SPACE TO REMOVE TUBES (FRONT)	IN		50	48	58	54	66	72	88
cm			127	122	148	138	168	183	224
SPACE TO REMOVE (TUBES (REAR)	IN		48	46	58	54	66	68	84
cm			122	117	148	138	168	173	214
BOXING FOR EXPORT	cu. ft.		193	256	287	309	386	515	564
m ³			5 1/2	7 1/4	8	8 3/4	10 3/4	14 1/2	16
WATER CAPACITY OPERATING LEVEL	gal's		101	137	169	213	266	334	402
Liters			382	518	640	806	1009	1264	1522
WATER CAPACITY FLOODED	gal's		114	153	189	235	292	421	506
Liters			432	579	715	890	1106	1594	1915
APPROX. SHIPPING WT.	15 psi lb.		1700	2300	2800	3600	4100	5000	6200
	1.05 Kg/cm ² Kg		771	1043	1270	1633	1860	2268	2812
	150 psi lb.		1900	2600	3200	4200	4750	6000	7200
	10.5 Kg/cm ² Kg		862	1179	1452	1905	2155	2722	3266
BOILER SIZE	No.		15	20	25	30	40	50	60

*Oil Pump operated by burner motor

SPECIFICATIONS SUBJECT TO CHANGE WITHOUT NOTICE





COMPARE BEFORE YOU BUY!!!

- Second low water cut-off, probe type, on all sizes.
- Standard controls (no specials), available in all major cities. You are NOT forced to buy parts and controls from factory.
- Rear tubes rolled and beaded on rear tube sheet of all low pressure units.
- All butt-welded seams are X-rayed, including firetube ASME Code Sections I & IV.
- Large combustion area. Compare volume in cubic feet and heat release.
- Smaller motor horsepower requirements for burners. Energy Savings.
- Smaller motor horsepower requirements for burners. Energy Savings.

Are you really getting a complete Package Boiler? . . . or a partial package with extras to pay for and install after purchase?

- Sled type skid construction with holes for hooks.
- Color coded wiring.
- Factory or Authorized Start-Up with 90-day free service.
- 4-hour, 7 day/week service available.
- Factory fire-test.
- Water column & feedwater connections on both sides of shell.
- Minimum of 5 sq. ft. fireside heating surface/horsepower in all Scotch Marine boilers.
- Blow-off valve(s) and piping.