



BLOW-OFF SEPARATORS

SAFE BOILER BLOW-OFF

CODE CONSTRUCTION (A.S.M.E./N.B.)

EASY INSTALLATION



WILLIAMS & DAVIS

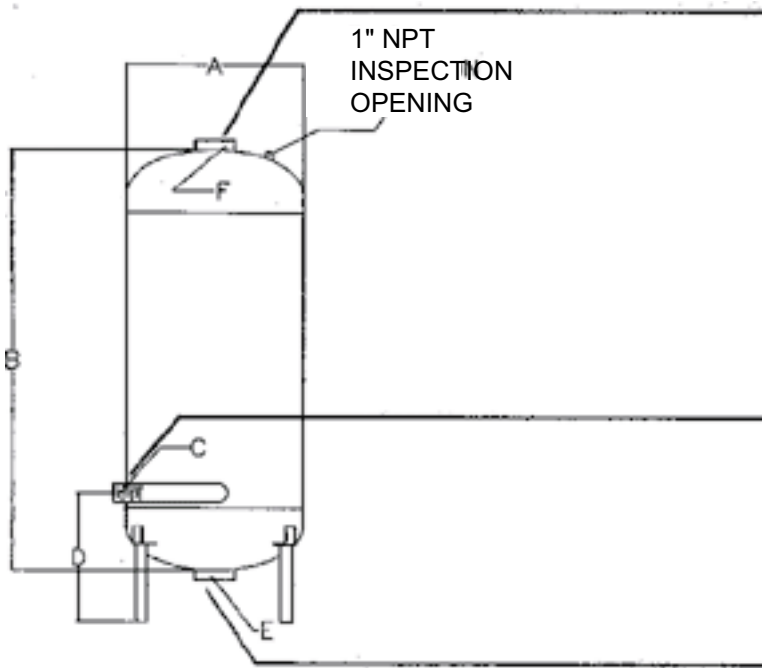
BOILERS, INC.

972-225-2356
1-800-8 BOILER
E-mail: w-dboilers@dhc.net

www.w-dboilers.com

P.O. BOX 539
HUTCHINS, TX 75141
FAX 972-225-5739

Separators are sized according to boiler operating pressure and blow-off valve size because they control the rate of flow to the separator. Vents are sized to keep internal flash pressures to a maximum of 5 PSI as recommended by the National Board of Boiler and Pressure Vessel Inspectors and as required by some state and municipal code authorities.



Top vent piping to atmosphere should be independent and as direct as possible, and NEVER reduced in size.

Inlet & Piping from the boiler to the separator should always be the same size as the boiler blow-off connection. (If separator is used with more than 1 boiler, inlet and piping from boilers to separator should always be the same size as the largest boiler blow-off connection.)

The drain connection from the separator or aftercooler should have free flow to the sewer, with a minimum number of elbows, etc. Horizontal drain piping must have adequate pitch, and long runs should be avoided.

DIMENSIONS

HP		1-15	16-100	101-750
A	in	10 3/4	14	20
	cm	27.3	35.6	50.8
B	in	20	36	48
	cm	50.8	91.4	121.9
C	in	1	1 1/2	2
	cm	2.54	3.81	5.08
D	Half couplings welded to bottom head/shell for connect. Legs of customer's threaded pipe.			
E	in	2	3	4
	cm	5.08	7.62	10.16
F	in	2 1/2	4	6
	cm	6.35	10.16	15.24
WEIGHT	lbs	94	225	525
	kg	42.7	102	238

Highlighted area flanged only.

Flanges are available on other sizes at additional charge.

Subject to change without notice.

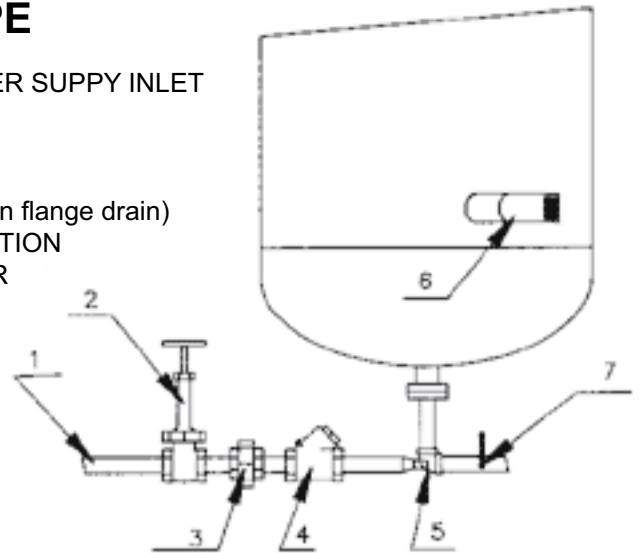
AFTERCoolERS FOR HOT LIQUIDS

AFTERCoolERS, properly sized for your respective conditions, take care of maximum temperature limitations on wastes entering public sewers to comply with local codes(s). Anti-pollution laws which will become universal also include temperature limits for discharge to sewers and public waters.

In many cities, blow-off to the atmosphere or to an open drain is prohibited. W&D Blow-Off Separators give complete safety to comply with local laws. Water, scale and sludge are carried to the sewer through a large drain and at the correct temperature. The flash steam and pressure are absorbed by the baffle plate and vented safely to the atmosphere.

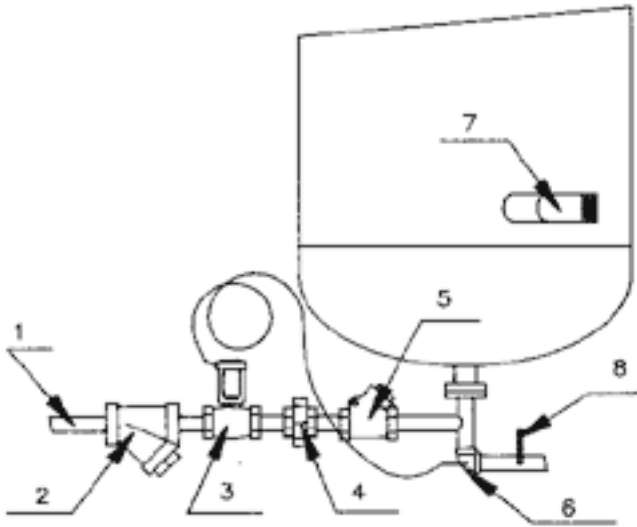
MANUAL TYPE

1. COOLING WATER SUPPLY INLET
2. VALVE
3. UNION
4. CHECK VALVE
5. 90 WELD ELL (on flange drain)
6. INLET CONNECTION
7. THERMOMETER



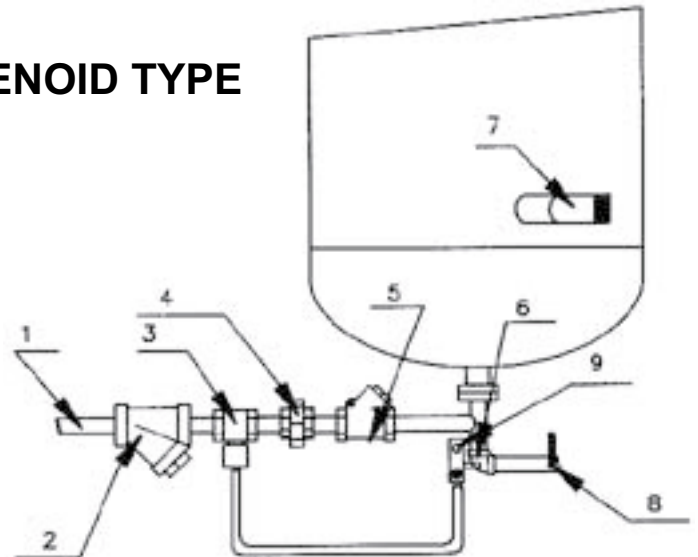
AUTOMATIC TEMPERATURE REGULATOR TYPE

1. COOLING WATER SUPPLY INLET
2. STRAINER
3. TEMPERATURE REGULATOR
4. UNION
5. CHECK VALVE
6. 90 WELD ELL (on flange drain)
7. INLET CONNECTION
8. THERMOMETER



AUTOMATIC ELECTRIC SOLENOID TYPE

1. COOLING WATER SUPPLY INLET
2. STRAINER
3. ELECTRIC VALVE
4. UNION
5. CHECK VALVE
6. 90 WELD ELL (on flange drain)
7. INLET CONNECTION
8. THERMOMETER
9. TEMPERATURE CONTROLLER



For required cooling of blowdown discharge before entering public sewer, select a W&D AFTERCoolER for manual or automatic control.