



BOILER FEED SYSTEM



Special Custom Built Feed System

WILLIAMS & DAVIS BOILERS, INC.

972-225-2356
1-800-8BOILER
E-mail: w-dboilers@dhc.net

www.w-dboilers.com



SIMPLEX, DUPLEX & TRIPLEX SYSTEMS

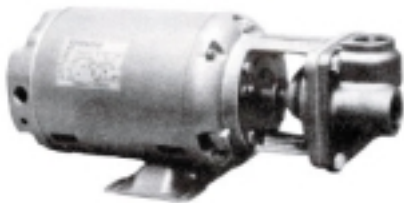
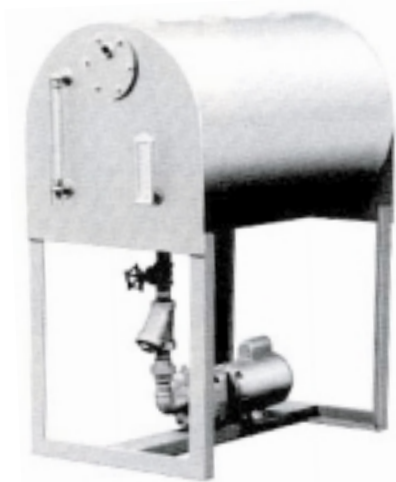


Heavy Steel Tank for Extra Long Life.
(1/4" steel 16"-38" diameter tanks, 3/8" steel 42" diameter and larger)

All bronze Float Valve* (inside tank) for hot water service with heavy duty copper float ball. Replaces lost water due to processing, etc.

Thermometer, Water Glass Set-1/2" npt Drain Valve and "Y" strainer.

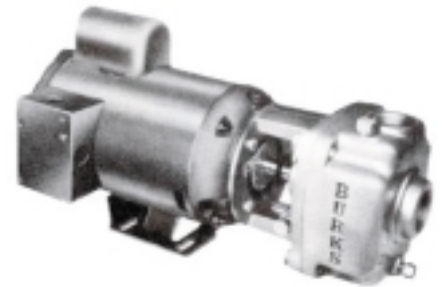
Gate Valve between tank and pump



Approx Size 9" x 16"

Heavy Duty pumps with mechanical seals. Pumps are repairable in the field. Mechanical seals mean no more wet floors.

- ★ **Self Priming**
- ★ **Bronze Impeller with Monel Metal Blades-only one moving part**
- ★ **Bronze Raceway with Cast-in Vorter Pockets**
- ★ **#303 Stainless Steel Pump Shaft**
- ★ **No couplings - Eliminates misalignment problems**
- ★ **Leakproof Mechanical Seal**



Approx Size 8" x 9" x 21"

These turbine pumps are especially engineered for boiler feed on steam process applications and serve at a 2 to 1 safety factor.

This is the only turbine pump providing "Life-Lok" External Impeller Adjustment that allows Readjustment of the impeller without disturbing piping, disassembling pump or replacing parts to compensate for normal wear after years of service. Gives up to 40% longer service life than turbine pumps of other designs.

Pump capacities are two times the amount of condensate the boiler will require at 100% of rating and when return water temperatures do not exceed 200 degrees Fahrenheit.

*On size 400 H.P. and larger an electric feed valve with Liquid Level control will be standard and is optional on smaller units.

CONDENSATE RETURN of BOILER FEED SYSTEM SPECIFICATIONS

Subject to change without notice

Size Hp 1-10	Actual GPM Evap. to .69	GPH 41.4	EDR Steam 1,400	PUMP MODEL GPM						Gallon Capacity Tank Size										
				15 PSIG	30 PSIG	100 PSIG	125 PSIG	150 PSIG	200 PSIG	WxLx* Model "A"	WxL Model "B"									
				.5GA5.25 36 1	.7GA5.25 35 1	.35 3.9 1	.56 3.7 1	.56 3.6 1	3-212 9	39 18X36	21 16X24									
15	1.0	62	2,100			.56 3.9 1														
20	1.3	83	2,800																	31 16x36
25	1.7	103	3,500						.77 5.0 1											
30	2.0	124	4,200			.77 5.5 1	.77 5.2 1													
40	2.7	166	5,600						1.5-5 7							52 18x48	42 16x48			
50	3.4	207	7,000			1.5-5 7.5	1.5-5 7.4	1.5-5 6.9								66 24X36	66 24X36			
60	4.1	248	8,400			1.5-5 8.3	1.5-5 8.3	2-6 9.5												
80	5.5	331	11,200			2-6 11	3-7 12.8	3-7 12	5-215 14							109 24X60	109 24X60			
100	6.9	414	14,000			3-7 13	5-9 21.5	5-9 20												
125	8.6	518	17,500			5-9 23	5-9 21.5		5-412 21							226 30X72	172 24X96			
150	10.4	621	21,000					5-410 34												
175	12.1	725	24,500			3-48 34	5-410 34		5-416.14 30											
200	13.8	828	28,000					5-412 28												216 24X160
250	17.3	1035	35,000			5-86 50	7.5-88 56	7.5-88 46	7.5-810 36							353 38X72	294 30X96			
300	20.7	1242	42,000	1.5GA5.25 57 1	1.5GA6.25 75 1	5-86 50			10-812 52											
350	24.2	1449	49,000			7.5-164 70			7.5-810 60											
400	27.6	1656	56,000													15-168 72	500 42X84			
500	34.5	2070	70,000	1.5GA5 80 1		10-165 110	10-165 70	15-166 80	15-168 72											
600	41.4	2484	84,000	2GA6.25 100	3GA261.25 100			15-305 130	15-167 95	20-308.7 105						752 48X96				
750	52	3105	105,000	3GA6.5 110	5GA6-1.5 129	15-304 135		20-308.6 135												
1000	69	4140	140,000	3GA6.5 160		15-305 160	20-308.6 170	20-308.7 160	25-3011.9 140							1070 54X108				

CONSULT
FACTORY

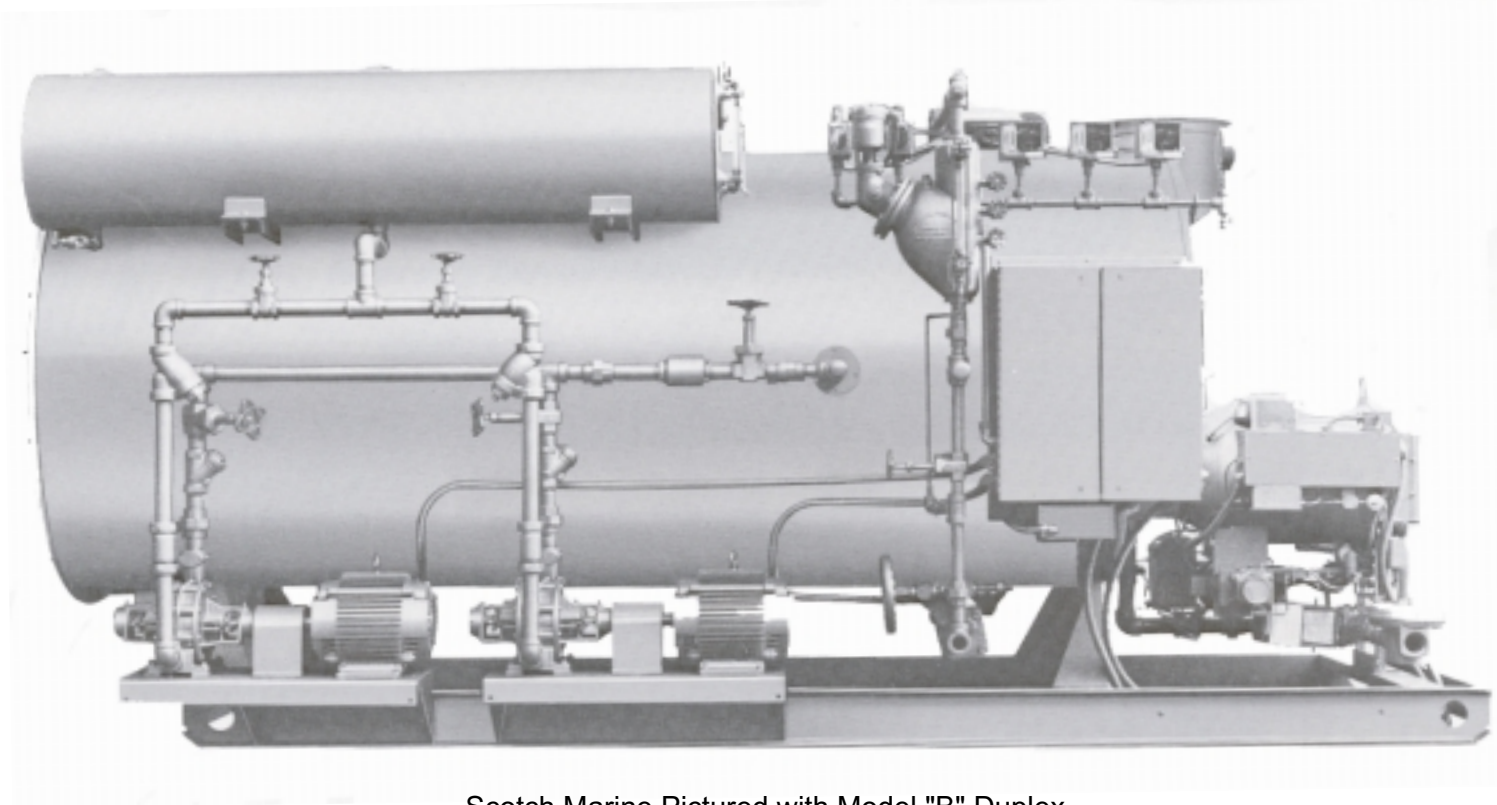
"1" In bottom right corner of box indicates 120 / 240 / 60 / 1 motors. Available (3) phase no extra charge. All motors are 3450 RPM.

PUMP NUMBERING SYSTEM:



*System height will be determined by pump supplied for application.
 All pumps have mechanical seals. Standard motors are open drip-proof.
 Make-up float valve: 1-100 HP = 1/2 " ; 101-500 HP = 3/4"; 501-1000 HP = 1".
 Systems at higher pressures quoted on request.





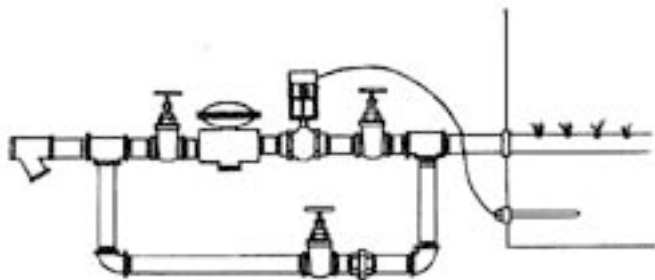
Scotch Marine Pictured with Model "B" Duplex

"MODEL "B" - EQUIPMENT SUPPLIED SAME AS MODEL "A" PLUS THE FOLLOWING:

Spring check valve 200 psig with renewable disc. Union Swing check valve 200 psig with renewable insert. Gate valve between pump discharge and boiler. Includes Starter for motor (if required). Requires no additional floor space, head room, piping or electrical wiring. All installed and factory tested.

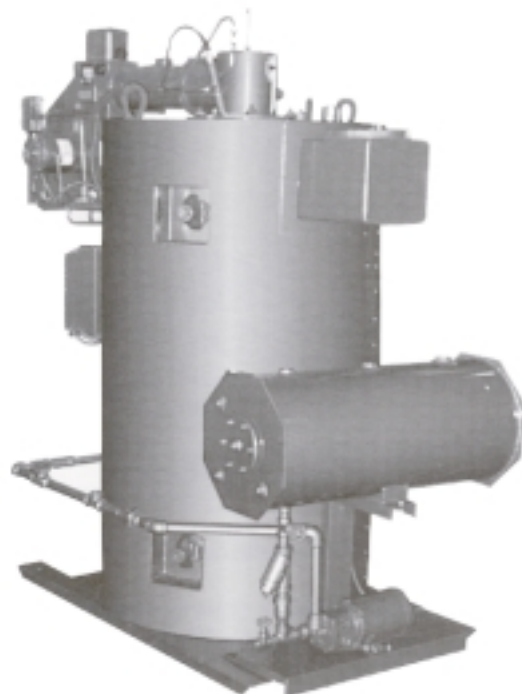
Custom built feed systems for special applications available upon request. Call or fax in your specifications for prompt quotations.

Optional Feedwater Preheating System



PREHEAT ASSEMBLY:

1. Suction tee w/pipe in flange attachment with or without automatic controls
2. Copper tube bundle without noise or turbulence. With temperature control, steam trap, strainer and piping. Controls shipped separate.



Vertical Tubeless Pictured with Model "B"